

SEPARATOR

H3

USER'S MANUAL



SAFETY GUIDE

Drain Separator Model H3 is a device that separates, removes the drain generated in the steam piping, and supplies good quality dry steam. Model H3 is compact design type and it is possible to use as separator for air.

In order to get maximum benefit from this product, be sure to read this manual before installing it.

The following warnings and cautions are shown at appropriate places in this manual.



Failure to observe this type of precaution may lead to serious injury or death.



Failure to follow this type of precaution can lead to injury or damage to equipment and property.

Table of Contents

| | | |
|---|---|---|
| 1 | SPECIFICATIONS AND MARKINGS | 1 |
| 2 | CONSTRUCTION DETAILS | 2 |
| 3 | INSTALLATION | 3 |
| 4 | MAINTENANCE | 4 |
| 5 | WARRANTY | 5 |
| 6 | SERIAL NUMBER (S. No.) DESIGNATION | 6 |
| 7 | GUIDANCE FOR READING SPECIAL PRODUCT NAME | 7 |

1 SPECIFICATIONS AND MARKINGS



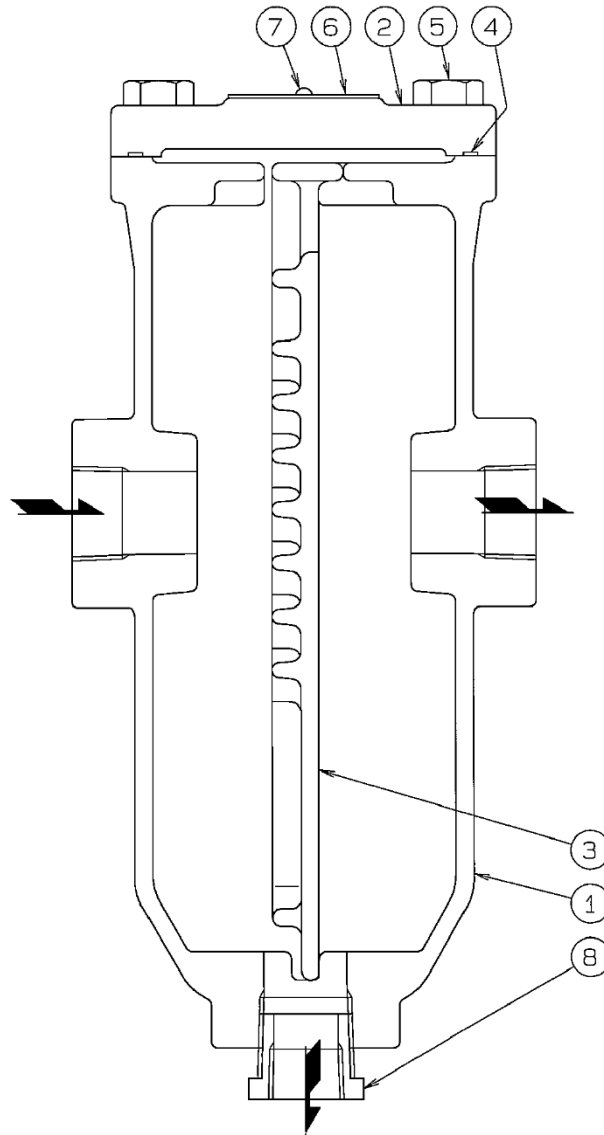
WARNING

Be sure not to use this product at higher pressures than the specified maximum operating pressure (PMO) or at temperatures higher than the specified maximum operating temperature (TMO).

Check the operating characteristics to avoid misuse of the product.

- 1) Maximum allowable pressure (PMA): 1.6 MPa (232 psig)
 - 2) Maximum allowable temperature (TMA): 220 °C (428 °F)
 - 3) Maximum operating pressure (PMO): 1.6 MPa (232 psig)
(Shown as MAX.P. on the name plate)
 - 4) Maximum operating temperature (TMO): 220 °C (428 °F)
(Shown as MAX.T. on the name plate)
 - 5) Size: 15 – 25 mm (1/2" – 1")
 - 6) Year of production: The two leftmost digits in the four-digit or nine-digit 'S. No.' are the last two digits of the year of production (see remarks on page 6).
 - 7) Flow direction: Shown by an arrow
 - 8) Body material: Cast iron FCD450
 - 9) Model: Showing the product model name
- Some pictures and illustrations in this manual are examples of H3 models. For more details regarding dimensions and other specifications, please refer to the catalog.

2 CONSTRUCTION DETAILS



-
1. Body
 2. Cover
 3. Buffle
 4. Gasket
 5. Bolt
 6. Name Plate
 7. Rivet
 8. Bush(for only Size:20mm and 25mm)

3 INSTALLATION

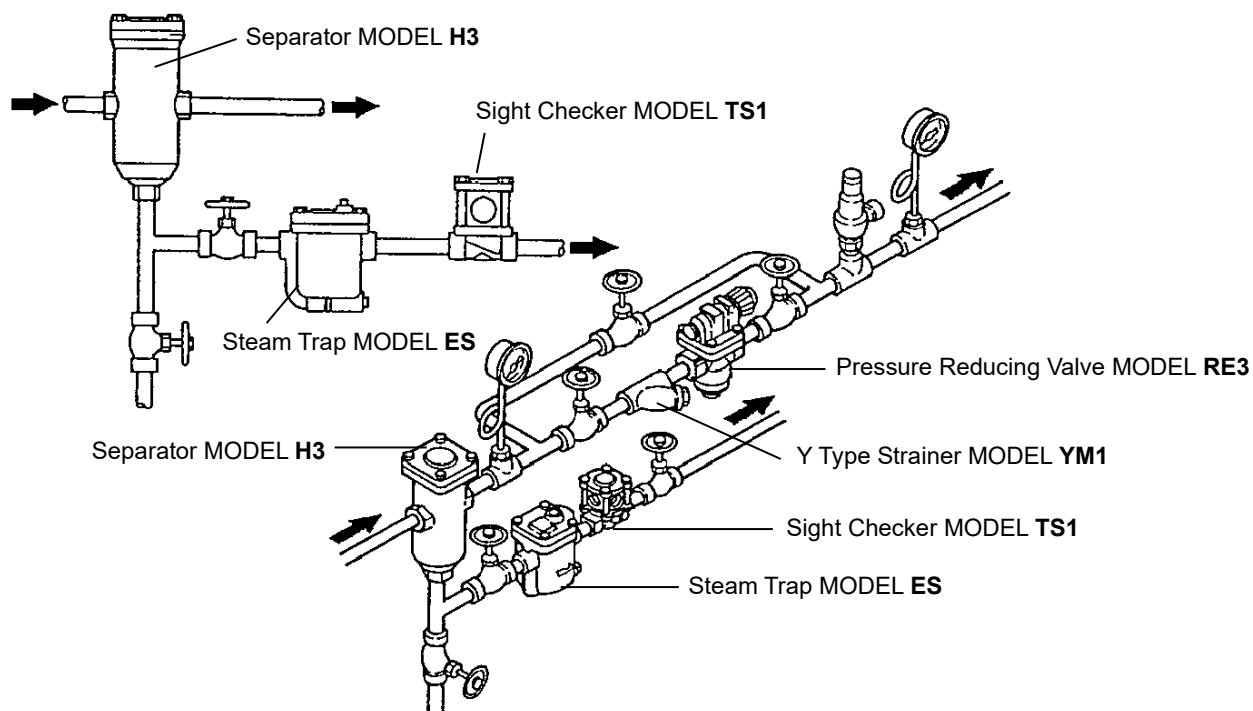


CAUTION

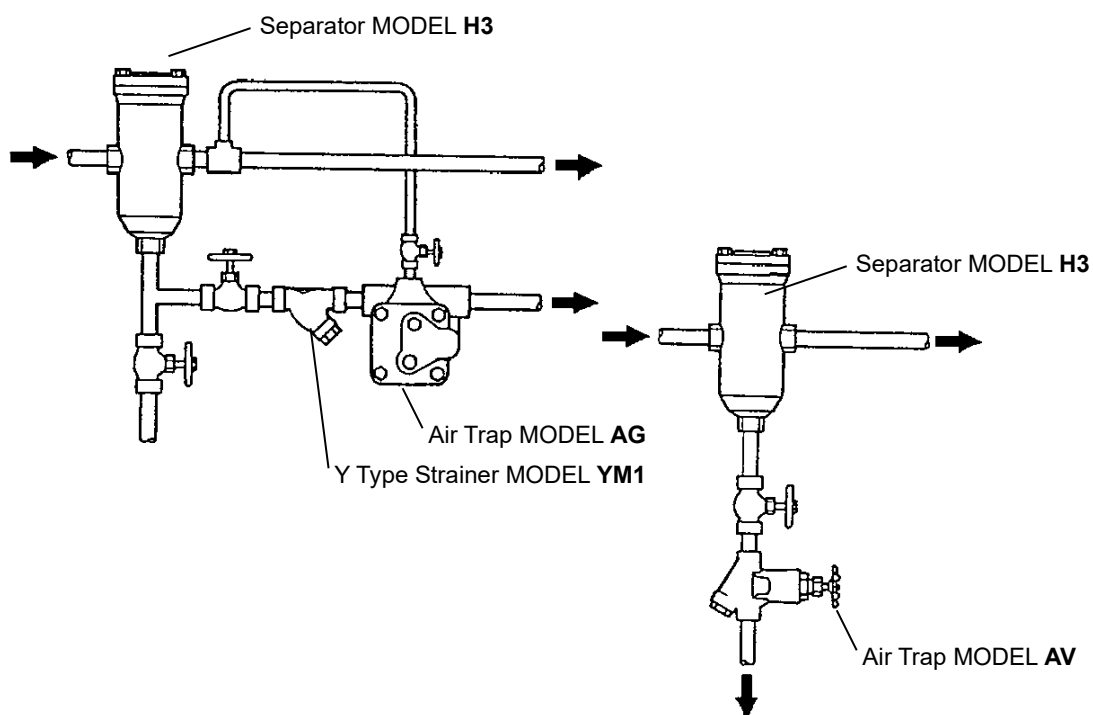
- Before installing the trap always blow off the slugs, scales, etc. from the piping.
- Separator can be installed horizontally.

- 1) Be sure to install a trap device below the drain discharge port.
- 2) The top end of the trap should be lower than the drain discharge port of Separator.

<For Steam Line>



<For Air Line>



4 MAINTENANCE



WARNING

When disassembling a hot trap, be sure to release the pressure inside to atmospheric pressure, and cool the trap before the work.

- 1) Dismantle the Cover Bolt (5), take off the Cover (2).
- 2) Clean and check the Body (1) internal, the Baffle (3).

Assemble in the opposite way of disassembling.

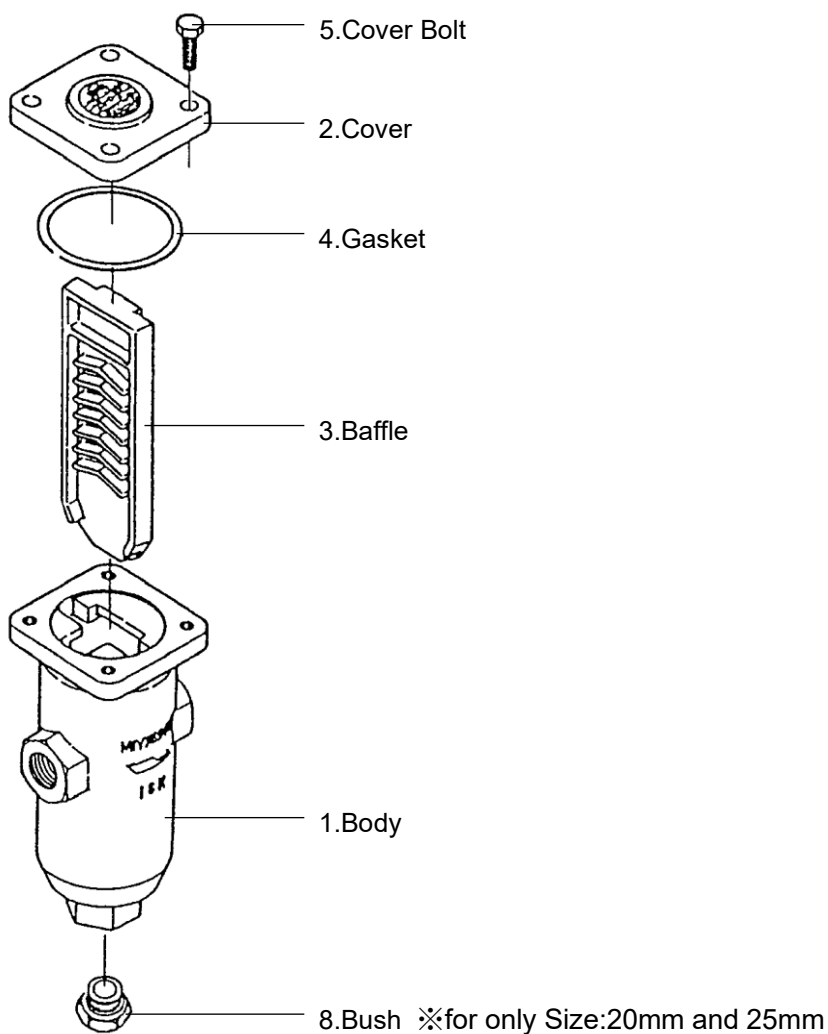


CAUTION

- Also Bolt(5) should be tightened evenly.
- When reassembling always replace the Gasket(4) to new one.

Torque table

| Size | Parts | Tools | Across the flats | Torque |
|------|---------|---------------|------------------|------------------|
| 15A | Bolt(5) | Torque Wrench | 13 mm | 15N·m(150kgf·cm) |
| 20A | | | 17 mm | 25N·m(250kgf·cm) |
| 25A | | | 17 mm | 32N·m(320kgf·cm) |



5 WARRANTY

7.1 Warranty period

The warranty period is 18 months after shipment or 12 months after installation, whichever occurs first.

7.2 Details of the warranty

If the product stops working correctly within the warranty period, we will repair or replace the product free of charge if the cause of the trouble is not one of the following items.

- 1) The precautions described in this manual were not observed.
- 2) User's errors or mistakes such as an inappropriate installation or incorrect handling, or an excessively large impact caused by dropping
- 3) Problems caused by devices or equipment other than MIYAWAKI's, or a disallowed use environment
- 4) When a repair or modification has been performed by anyone other than MIYAWAKI or people who are authorized to make such repairs
- 5) Intrusion of salt or other substances that promote significant rust or corrosion or problems from fluids that contain the same substances
- 6) Consumable parts such as Packing, Gasket, O-ring, Diaphragm, etc.
- 7) Attachment or accumulation of foreign matter in the pipe, such as dust and scale
- 8) Problems from fires, natural disasters, or other force majeure which is not MIYAWAKI's responsibility

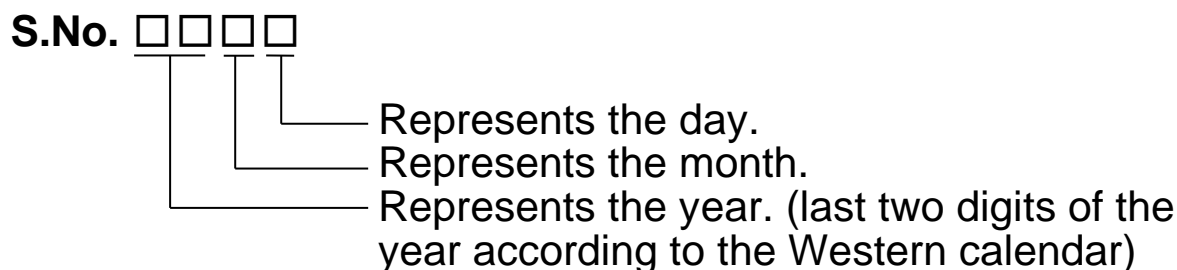
7.3 Warranty limitation

The remedy available under the warranty shall not exceed the sales price of the products delivered, for any cause whatsoever.

6 SERIAL NUMBER (S. No.) DESIGNATION

The following 4-digit or 9-digit 'S. No.' is displayed on the product.

- For 4-digit display

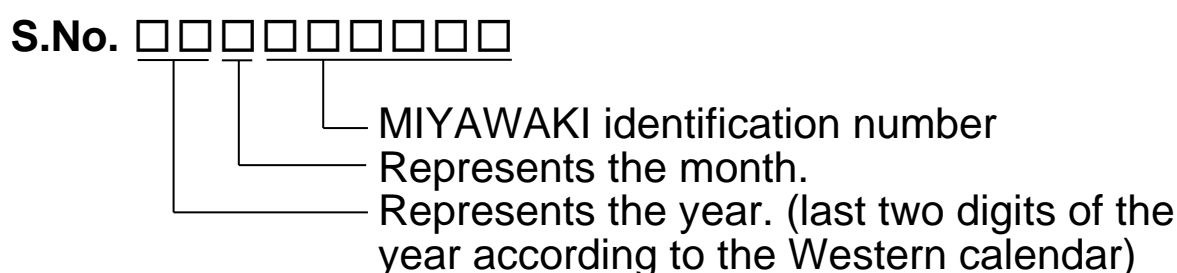


Example of serial number designation

1 7 1 1 → Jan.1, 2017

2 9 X M → Oct. 21, 2029

- For 9-digit display



Example of serial number designation

1 7 1 1 2 C 0 2 0 → Jan., 2017

2 9 X 0 5 M 0 5 0 → Oct., 2029

Month designation system

| Month | 1 | 2 | 3 | 4 | 5 | 6 | 7 | 8 | 9 | 10 | 11 | 12 |
|--------|---|---|---|---|---|---|---|---|---|----|----|----|
| Symbol | 1 | 2 | 3 | 4 | 5 | 6 | 7 | 8 | 9 | X | Y | Z |

Day designation system

| Day | 1 | 2 | 3 | 4 | 5 | 6 | 7 | 8 | 9 | 10 | 11 | 12 |
|--------|---|---|---|---|---|---|---|---|---|----|----|----|
| Symbol | 1 | 2 | 3 | 4 | 5 | 6 | 7 | 8 | 9 | A | B | C |

| Day | 13 | 14 | 15 | 16 | 17 | 18 | 19 | 20 | 21 | 22 | 23 | 24 |
|--------|----|----|----|----|----|----|----|----|----|----|----|----|
| Symbol | D | E | F | G | H | J | K | L | M | N | O | P |

| Day | 25 | 26 | 27 | 28 | 29 | 30 | 31 |
|--------|----|----|----|----|----|----|----|
| Symbol | Q | R | S | T | U | V | W |

7 GUIDANCE FOR READING SPECIAL PRODUCT NAME

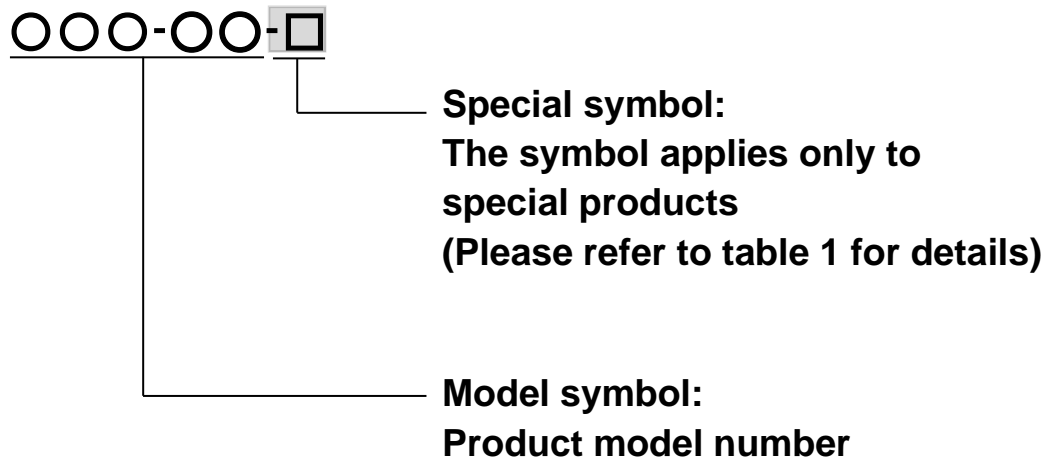


Table 1 Symbol description

| Suffix | Special contents |
|--------|---|
| A | Trap for high-pressure gas installed property (only for Gas Trap) |
| C | Blow valve attached |
| K | Change of gasket |
| L | Special face to face dimension |
| M | Change of parts material |
| P, T | Change of operating pressure, temperature, condensate capacity, etc |
| R | Change of screen mesh |
| V | Change of air vent |
| X | Other than mentioned above or complex of special contents above |

For any questions about the product that you purchased or about the details in this user's manual, please contact the following.

- © 2025 MIYAWAKI INC.

This user's manual may not be reproduced or copied in whole or in part, without the written consent of MIYAWAKI INC.

- Some special specifications of the product you have, may found to be different from the ones in the user's manual. If you have any question, please contact MIYAWAKI, our local authorized agent, or the place where you purchased.
-



If you need any assistance regarding this manual, please contact
MIYAWAKI INC.'s International Sales Dept. or its local representative.
By scanning QR Code, you can access inquiry form.



INTERNATIONAL SALES DEPT.

2-1-30, Tagawakita, Yodogawa-ku, Osaka, 532-0021, Japan

Tel: +81-6-6302-5549

www.miyawaki-inc.com/en e-mail: export@miyawaki-inc.co.jp

EU Importer and Authorized representative:



MIYAWAKI GmbH

Birnbaumsmühle 65, 15234 Frankfurt (Oder), Germany

Tel: +49-335-4007-0097

www.miyawaki.de e-mail: info@miyawaki.de

China Importer and Authorized representative:



MIYAWAKI WEST Co.,Ltd

Room902 ,Building 8, Huaqing Chuangzhi Park, No.3 Qingyan Road, Huishan District,
Wuxi City Jiangsu Province China

Tel: +86-510-8359-5125

www.miyawaki-inc.com.cn e-mail: mywkwest@miyawaki-inc.com.cn

808099-05 2503

H3