

BLOW VALVE

VB1/VB1R

USER'S MANUAL

SAFETY GUIDE

The model VB1 is a manual blow valve installed on steam trap to blow dirt or scale which are accumulated in the steam trap. Condensate in the installation section can be discharged to prevent from freezing by blowing when steam flow is stopped.

In order to get maximum benefit from this product, be sure to read this manual before installing it.

The following warnings and cautions are shown at appropriate places in this manual.



Failure to observe this type of precaution may lead to serious injury or death.



Failure to follow this type of precaution can lead to injury or damage to equipment and property.

Table of Contents

1	SPECIFICATIONS	1
2	CONSTRUCTION DETAILS	2
3	INSTALLATION	2
4	MAINTENANCE	3
5	WARRANTY	4
6	SERIAL NUMBER (S. No.) DESIGNATION	5
7	GUIDANCE FOR READING SERIAL PRODUCT NAME	6

1. SPECIFICATIONS



WARNING

Be sure not to use this product at higher pressures than the specified maximum operating pressure (PMO) or at temperatures higher than the specified maximum operating temperature (TMO).

Body material: Stainless Steel SUS403

Connection: VB1: Parallel male thread (G) 1/4"

VB1R: Tapered male thread (R) 1/4"

Maximum Operating Pressure: 6.4 MPa

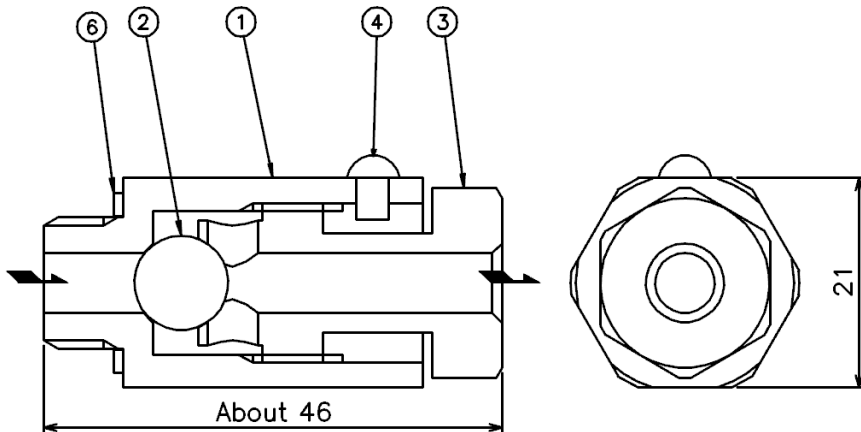
Maximum Operating Temperature: 425°C

S. No.: Showing the year and date of production

Turn the valve guide (3) (Across the flats:17mm) to open and close the blow valve.

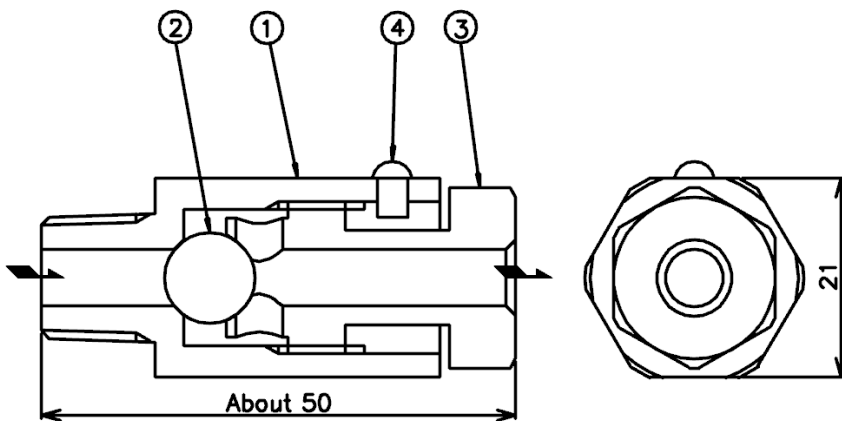
2. CONSTRUCTION DETAILS

Model VB1



1. Body
2. Valve
3. Valve guide
4. Rivet
6. Gasket

Model VB1R



Unit: mm

3. INSTALLATION



CAUTION

- Before installing the product, remove any dirt or scale from the installation section.
- Wear rubber gloves and be careful of burns and steam blowing out.

- 1) The VB1/VB1R can be installed in any direction. However, steam or condensate blow out from the outlet so that install it in such a way that the blow will not cause any problem.
- 2) Install VB1/VB1R to be maintained easily.

4. MAINTENANCE



CAUTION

- **When replacing parts, make sure that the replacement parts are supplied by Miyawaki.**
- **When the assembly/disassembly is being performed, check that the pressure inside the product equals atmospheric pressure and allow time for the temperature to drop to a safe working temperature. (Vent the pressure in the trap, and allow it to cool down to a safe working temperature before disassembly or repair operations. When working while the pressure and temperature are high, the fluid can escape, which may lead to possible burns or injuries.)**

If an issue arises with the blow valve, taking a corresponding action may improve the situation. If it does not improve, replace the product.

1. Problem: Steam leak occurs from the install section of the blow valve.

Action: Retighten the body of the blow valve.

Remove the blow valve, re-attach the sealant and install the blow valve again.

If the gasket is damaged, replace it with a new one. (VB1 only)

2. Problem: Steam leaks from the blow valve.

Action: Loosen the valve guide (3) and clean the inlet and outlet.

If the valve or the valve seat is damaged, replace the product.

3. Problem: The blow valve remains closed.

The thread of the valve guide Seizure.

Action Replace the product.

5. WARRANTY

5.1 Warranty period

The warranty period is 18 months after shipment or 12 months after installation, whichever occurs first.

5.2 Details of the warranty

If the product stops working correctly within the warranty period, we will repair or replace the product free of charge if the cause of the trouble is not one of the following items.

- 1) The precautions described in this manual were not observed
- 2) User's errors or mistakes such as an inappropriate installation or incorrect handling, or an excessively large impact caused by dropping
- 3) Problems caused by devices or equipment other than ours, or a disallowed use environment
- 4) When a repair or modification has been performed by anyone other than us or people who are authorized to make such repairs
- 5) Intrusion of salt or other substances that promote significant rust or corrosion or problems from fluids that contain the same substances
- 6) Consumable parts such as Packing, Gasket, O-ring, Diaphragm, etc
- 7) Attachment or accumulation of foreign matter in the pipe, such as dust and scale
- 8) Problems from fires, natural disasters, or other force majeure which is not our responsibility

5.3 Warranty limitation

The remedy available under the warranty shall not exceed the sales price of the products delivered, for any cause whatsoever.

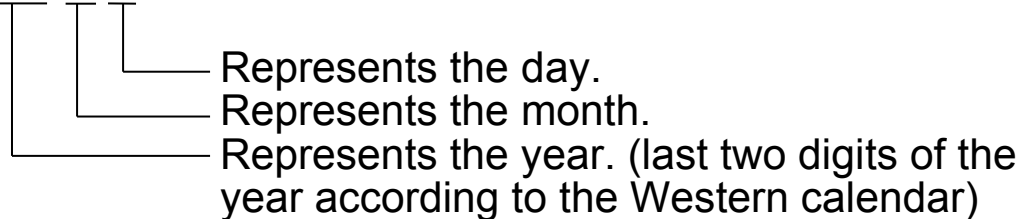
6. SERIAL NUMBER (S. No.) DESIGNATION

The S. No. is indicated on the side of the cover.

The following 4-digit or 9-digit 'S.No.' is displayed on the product.

- For 4-digit display

S.No. □□□□



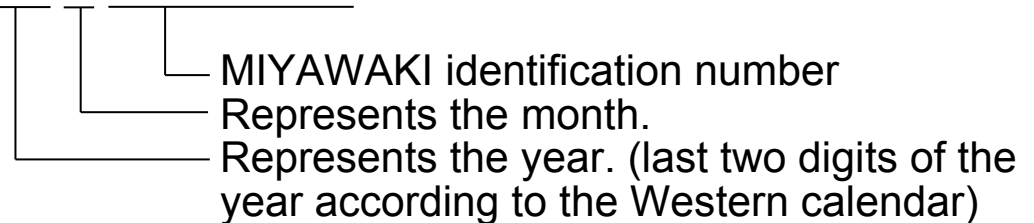
Example of serial number designation

1 7 1 1 → Jan.1, 2017

2 9 X M → Oct. 21, 2029

- For 9-digit display

S.No. □□□□□□□□□



Example of serial number designation

1 7 1 1 2 C 0 2 0 → Jan., 2017

2 9 X 0 5 M 0 5 0 → Oct., 2029

Month designation system

Month	1	2	3	4	5	6	7	8	9	10	11	12
Symbol	1	2	3	4	5	6	7	8	9	X	Y	Z

Day designation system

Day	1	2	3	4	5	6	7	8	9	10	11	12
Symbol	1	2	3	4	5	6	7	8	9	A	B	C

Day	13	14	15	16	17	18	19	20	21	22	23	24
Symbol	D	E	F	G	H	J	K	L	M	N	O	P

Day	25	26	27	28	29	30	31
Symbol	Q	R	S	T	U	V	W

7. GUIDANCE FOR READING SERIAL PRODUCT NAME

The product model is indicated on the name label.

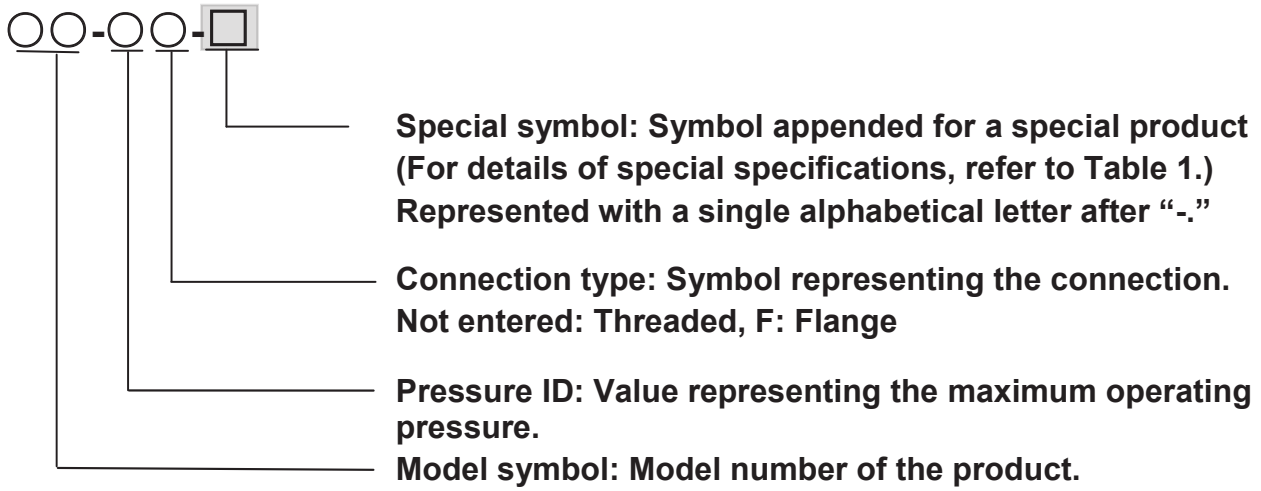


Table 1 Descriptions of symbols for typical special specifications

Symbol	Details of special specifications
A	Trap for high-pressure gas equipment
C	Product with a blow valve
K	Change of the gasket used
L	Change of the face-to-face dimension
M	Change of a material of a part used
P, T	Change of operating pressure, temperature, capacity, etc.
R	Change of the screen mesh
V	Change of the air vent
X	Other special specifications or a special specification that combines the above

For any questions about the product that you purchased or about the details in this user's manual, please contact the following.

- © 2023 MIYAWAKI INC.

This user's manual may not be reproduced or copied in whole or in part, without the written consent of MIYAWAKI INC.

- Some special specifications of the product you have, may found to be different from the ones in the user's manual. If you have any question, please contact MIYAWAKI, our local authorized agent, or the place where you purchased.
-



If you need any assistance regarding this manual, please contact MIYAWAKI INC.'s International Sales Dept. or its local representative. By scanning QR Code, you can access inquiry form.



INTERNATIONAL SALES DEPT.
2-1-30, Tagawakita, Yodogawa-ku, Osaka, 532-0021, Japan
Tel: +81-6-6302-5549
www.miyawaki-inc.com/en e-mail: export@miyawaki-inc.co.jp

EU Importer and Authorized representative:



Birnbaumsmühle 65, 15234 Frankfurt (Oder), Germany
Tel: +49-335-4007-0097
www.miyawaki.de e-mail: info@miyawaki.de

China Importer and Authorized representative:



Room902 ,Building 8, Huaqing Chuangzhi Park, No.3 Qingyan Road, Huishan District,
Wuxi City Jiangsu Province China
Tel: +86-510-8359-5125
www.miyawaki-inc.com.cn e-mail: mywkwest@miyawaki-inc.com.cn

808104-01 2304

VB1