

OPERATION MANUAL
FOR
Thermodynamic Steam Trap
MODEL:SL3



SAFETY

The following warnings and cautions are shown at appropriate places in this manual.



WARNING

Failure to observe this type of precaution may lead to serious injury or death.



CAUTION

Failure to follow this type of precaution can lead to injury or damage to equipment and property.

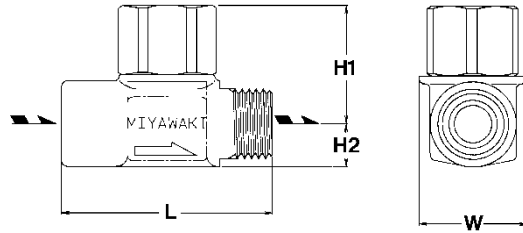
TABLE OF CONTENTS

1. Introduction	P.1
2. Dimensions and Specifications	P.1
3. Installation	P.1
4. Trouble Shooting	P.2
5. Maintenance	P.4
6. Construction	P.4
7. Warranty	P.5
8. Serial number (S. No.) designation	P.6
9. Guidance for reading special product name	P.7

1. Introduction


Model SL3 is all stainless steel body miniature thermodynamic steam trap made especially for tracing applications and steam irons. The connection of SL3 is male screw with inlet side pipe tapr thread And outlet side parallel pipe thread. It is one of the smallest thermodynamic steam trap in the world.

2. Dimensions and Specifications



Model No.	Connection	Size mm (inch)	Operating Pressure MPa	Maximum Temperature °C(°F)	Material of Body	Dimensions (mm)				Weight (kg)
						L	H1	H2	W	
SL3	Screwed	8(1/4")	0.03 to 1.0	400 (428)	Stainless Steel (SUS416)	40	22	8	19	0.062

3. Installation

 CAUTIONS	Before installing the trap, always blow off the sludge, scales, etc. from the piping.
---	---

- 1) Install the trap according to the direction of the arrow on the body.
- 2) Thermodynamic steam traps can be installed either horizontally or vertically.
- 3) Install the outlet condensate piping at the lowest point of the steam using equipment. The trap should be install so that condensate will flow naturally into the trap.

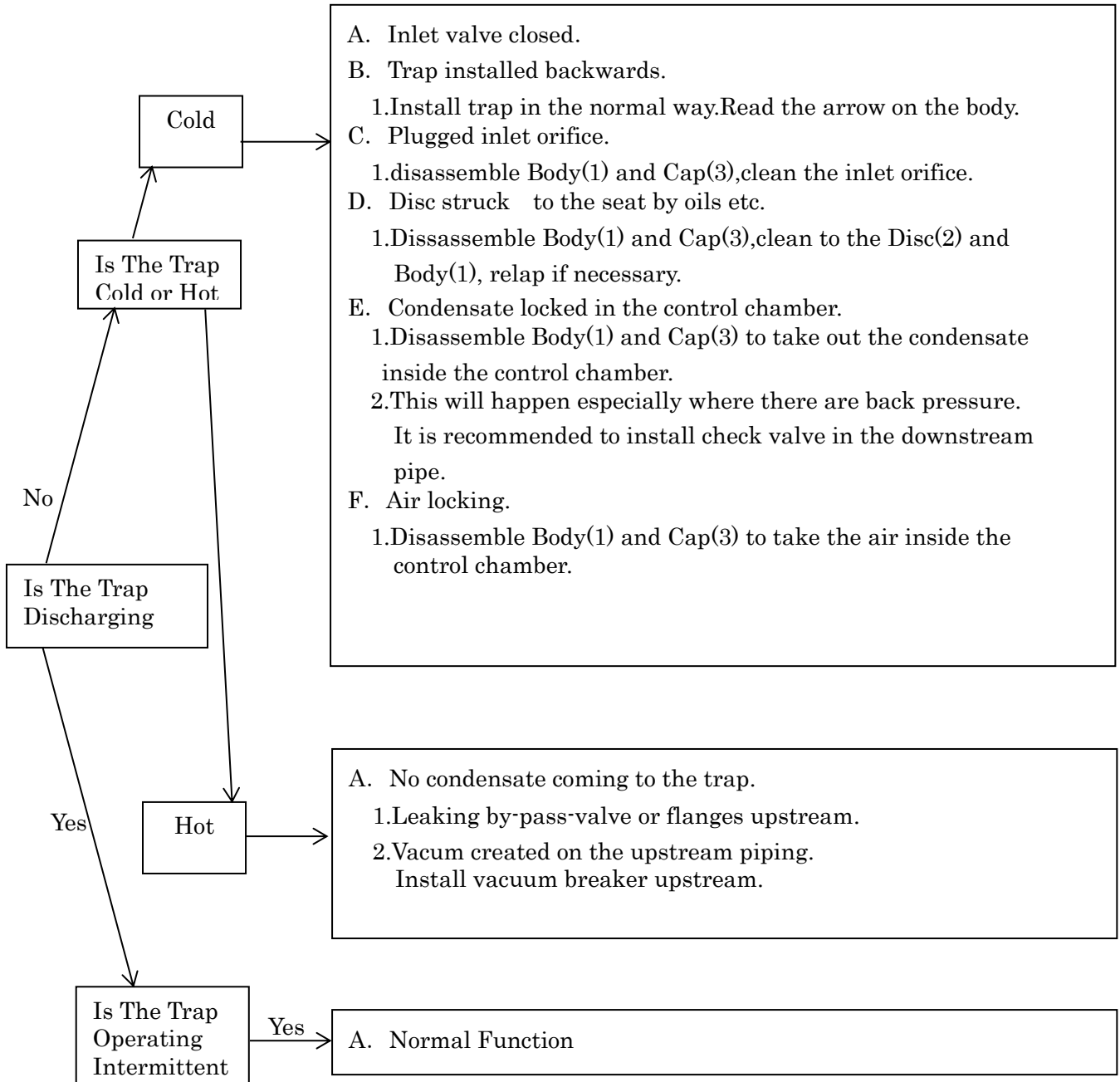
4. Trouble Shooting

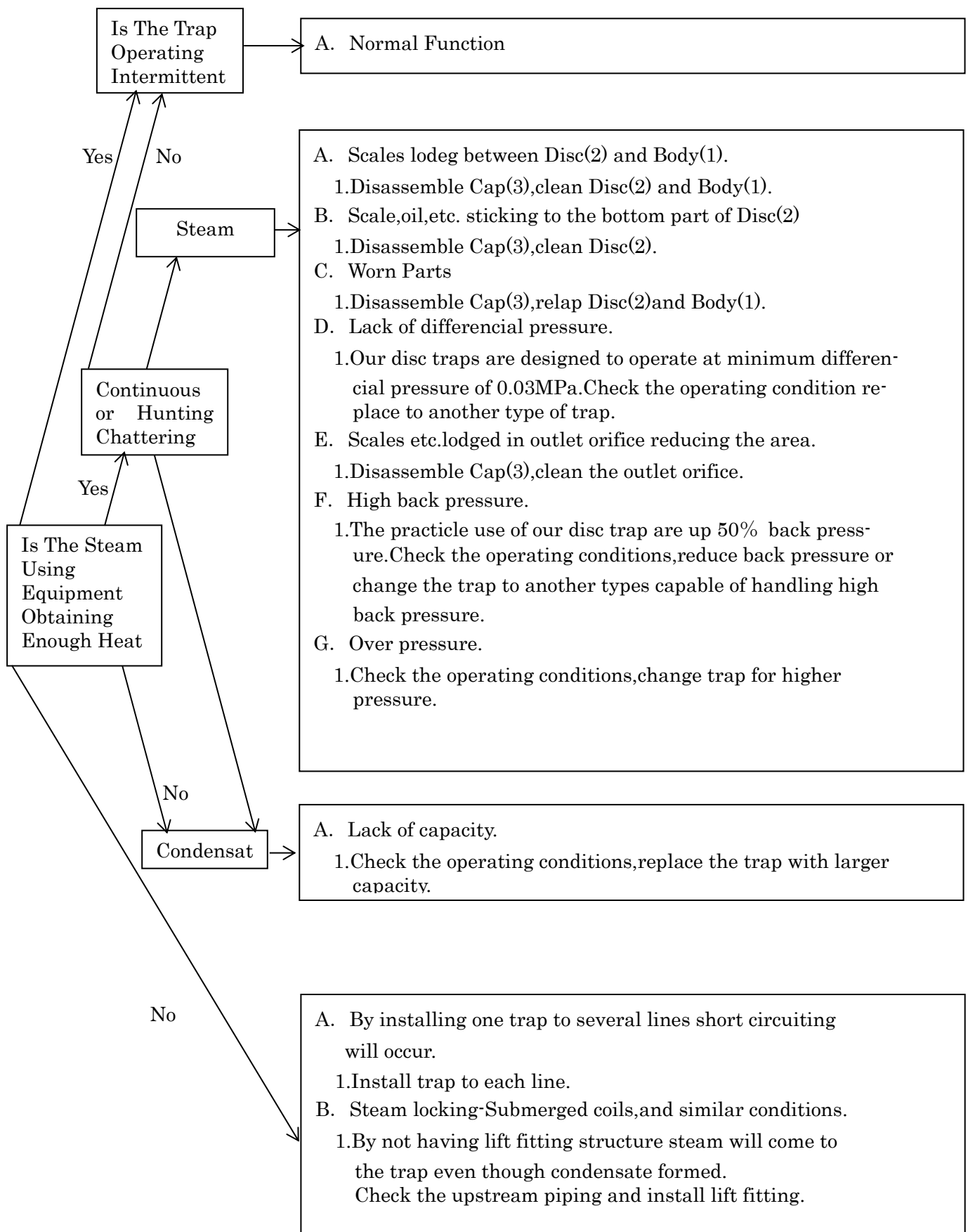
The thermodynamic disc trap has an intermittent operation function. It will discharge and stop at certain cycles. The improper operations will be : No discharge, trap hot or cold.

Continuous discharge condensate or steam.


Hunting, Chattering : The cycles being too short and/or a continuous noise without condensate discharge.

Refer to the Drawing in Page 5

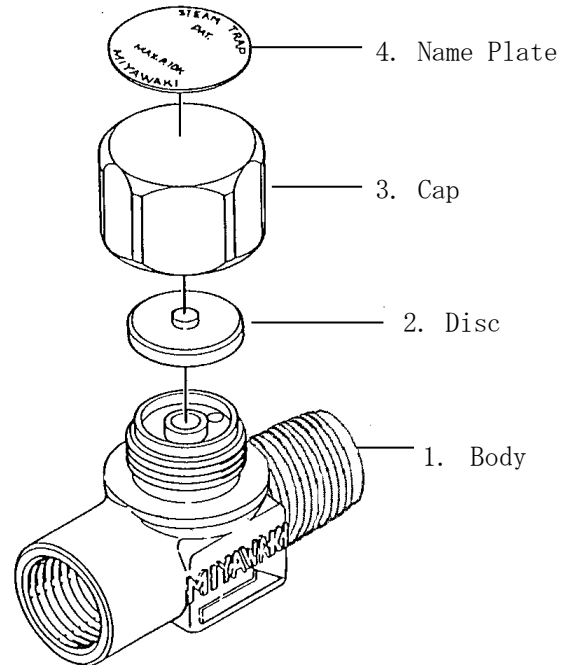




5. Maintenance

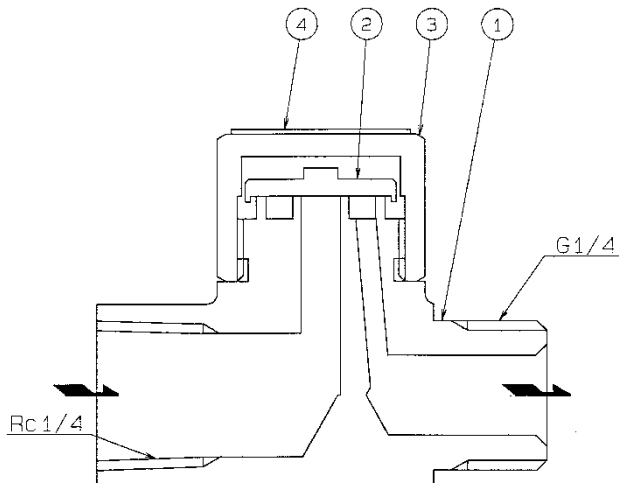
 WARNING	When disassembling a hot trap be, sure to release the pressure inside to atmospheric pressure, and cool the trap before the opening it.
--	---

- A. Disassemble the cap (3) with a wrench turning counter-clockwise, disc(2) will come out.
- B. This trap has integral seat. The seat is fixed to the body.
Please check the body (1), disc (2), cap (3) and clean.
- C. If there are no defects reassemble in the opposite of dis assembling.
The clamp torque for the cap (3) is as the Following chart.
- D. IF the disc (2) and seat of the body(1) is worn or defected please exchange the whole trap to new one.



No.	Parts	Size	Clamp Torque
8	Plug	35mm	100N·m

6. Construction



1. Body
2. Disc
3. Cap
4. Name Plate

7. Warranty

7.1 Warranty period

The warranty period shall last 12 months from the date of product delivery.

7.2 Details of the warranty

If the product stops working correctly within the warranty period, we will repair or replace the product free of charge if the cause of the trouble is not one of the following items.

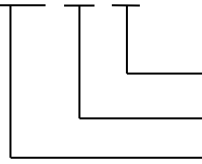
- 1) The precautions described in this manual were not observed
- 2) User's errors or mistakes such as an inappropriate installation or incorrect handling, or an excessively large impact caused by dropping
- 3) Problems caused by devices or equipment other than ours, or a disallowed use environment
- 4) When a repair or modification has been performed by anyone other than us or people who are authorized to make such repairs
- 5) Intrusion of salt or other substances that promote significant rust or corrosion or problems from fluids that contain the same substances
- 6) Consumable parts such as Packing, Gasket, O-ring, Diaphragm, etc
- 7) Attachment or accumulation of foreign matter in the pipe, such as dust and scale
- 8) Problems from fires, natural disasters, or other force majeure which is not our responsibility

7.3 Warranty limitation

The remedy available under the warranty shall not exceed the sales price of the products delivered, for any cause whatsoever.

8. Serial number (S. No.) designation

S.No. □ □ □ □



Represents the day.

Represents the month.

Represents the year. (last two digits of the year according to the Western calendar)

Month designation system

Symbol	Month	Symbol	Month	Symbol	Month	Symbol	Month
1	1	4	4	7	7	X	10
2	2	5	5	8	8	Y	11
3	3	6	6	9	9	Z	12

Day designation system

Symbol	Day	Symbol	Day	Symbol	Day	Symbol	Day
1	1	9	9	H	17	Q	25
2	2	A	10	J	18	R	26
3	3	B	11	K	19	S	27
4	4	C	12	L	20	T	28
5	5	D	13	M	21	U	29
6	6	E	14	N	22	V	30
7	7	F	15	O	23	W	31
8	8	G	16	P	24		

Example of serial number designation

1 7 1 1 → Jan 1, 2017

2 9 X M → Oct 21, 2029

9. Guidance for reading special product name

○○○-○○-□

Special symbol:
Symbol apply only to special product
(Please refer to table 1 for details)
 English letter after “-“

Model symbol:
Product model number

Table 1 Symbol description

Suffix	Special contents
A	Trap for high-pressure gas installed property (only for Gas Trap)
C	Blow valve attached
K	Change of gasket
L	Special face to face dimension
M	Change of parts material
P, T	Change of operating pressure, temperature, condensate capacity, etc
R	Change of screen mesh
V	Change of air vent
X	Other than mentioned above or complex of special contents above

-
- For any questions about the product that you purchased or about the details in this user's manual, please contact the following.
 - © 2017 MIYAWAKI INC.
This user's manual may not be reproduced or copied in whole or in part, without the written consent of MIYAWAKI INC.
 - Some special specifications of the product you have, may found to be different from the ones in the user's manual. If you have any question, please contact MIYAWAKI, our local authorized agent, or the place where you purchased.
-



INTERNATIONAL SALES DEPT.

2-1-30, Tagawakita, Yodogawa-ku, Osaka, 532-0021, Japan

Tel: +81-6-6302-5549

www.miyawaki.net e-mail: export@miyawaki-inc.co.jp

EU Importer and Authorized representative:



MIYAWAKI GmbH

Birnbaumsmühle 65, 15234 Frankfurt (Oder), Germany

Tel: +49-335-4007-0097

www.miyawaki.net e-mail: info@miyawaki.de

China Importer and Authorized representative:



MIYAWAKI WEST Co.,ltd

Room 1705, No.1, Building, No.311, Yanxin Road, Huishan Economic Development Zone,
Wuxi, Jiangsu, China

Tel: +86-510-8359-5125

www.miyawaki-inc.com.cn e-mail: mywkwest@miyawaki-inc.com.cn

808113-02 1908

SL3