

VACUUM BREAKER

CVU15

USER'S MANUAL



SAFETY



WARNING

The model CVU15 is a stainless steel vacuum breaker with threaded ends.

In order to get maximum benefit from this product, be sure to read this manual thoroughly before installing the product.

The following warnings and cautions are shown at appropriate places in this manual.



Failure to observe this type of precaution may lead to serious injury or death.



Failure to follow this type of precaution can lead to injury or damage to equipment and property.

Table of Contents

1. SPECIFICATION AND MARKING	1
2. CONSTRUCTION DETAILS	2
3. INSTALLATION	3
4. MAINTENANCE	4
5. WARRANTY	5
6. SERIAL NUMBER (S.No.) DESIGNATION	6
7. GUIDANCE FOR READING SPECIAL PRODUCT NAME	7

1 SPECIFICATION AND MARKING



WARNING

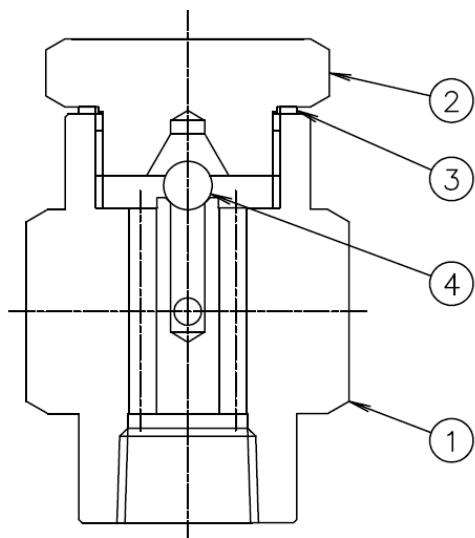
Be sure not to use this product at higher pressures than the specified maximum operating pressure (PMO) or at temperatures higher than the specified maximum operating temperature (TMO).

This product may occur steam leaks slightly from the air inlet connection because of metal-to-metal seals. Please connect the pipe to air inlet connection and pull piping to a safe location when installing.

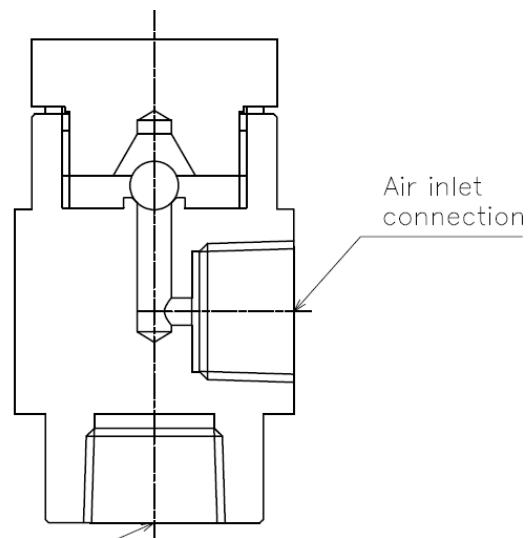
The following items are displayed on the cap or the side of the product.
Check each item to avoid misuse of the product.

- (1) Maximum allowable pressure (PMA): 2,1 MPa (305 psig)
- (2) Maximum allowable temperature (TMA): 450°C (842°F)
- (3) Maximum operating pressure (PMO): 2,1 MPa (305 psig)
- (4) Maximum operating temperature (TMO): 450°C (842°F)
- (5) Size: 1/2" x 1/8" and 1/2" x 1/2"
- (6) Serial number: Showing the year and date of production
- (7) Body material: Stainless Steel SUS304

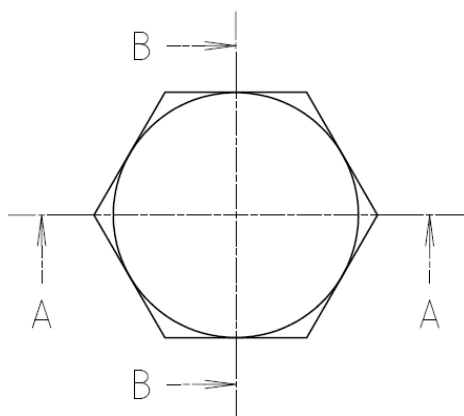
2 CONSTRUCTION DETAILS



SECTION A-A



SECTION B-B



1.	Body
2.	Cap
3.	Gasket
4.	Ball

3 INSTALLATION



WARNING

Pay very careful attention when working in hazardous environments. There is a risk of explosion and the possibility of dangerous gases leaking. Always check whether the pipeline contains flammable, high pressure or high temperature materials before starting to work.

- Make sure that isolation valves are installed on both the upstream and downstream lines.



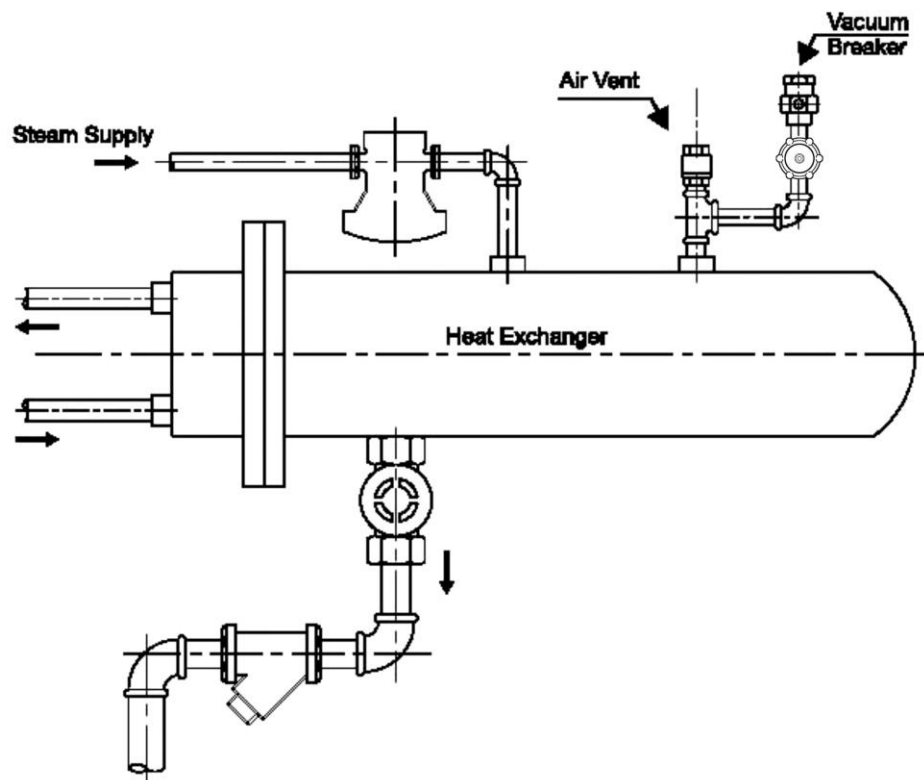
CAUTION

Before installing the product, open both isolation valves and the bypass valve, if one exists, to blow out any debris or dirt inside the pipeline or equipment. After blowing out the line and/or the equipment, before starting to work, close the isolation valves and allow time for the temperature to drop to a safe working temperature.

When installing the product, be sure to leave clearance for maintaining it.

The vacuum breaker should be installed vertically with the marking side of the cap facing up and should be placed at the highest point in the system.

Typical installation



4 MAINTENANCE



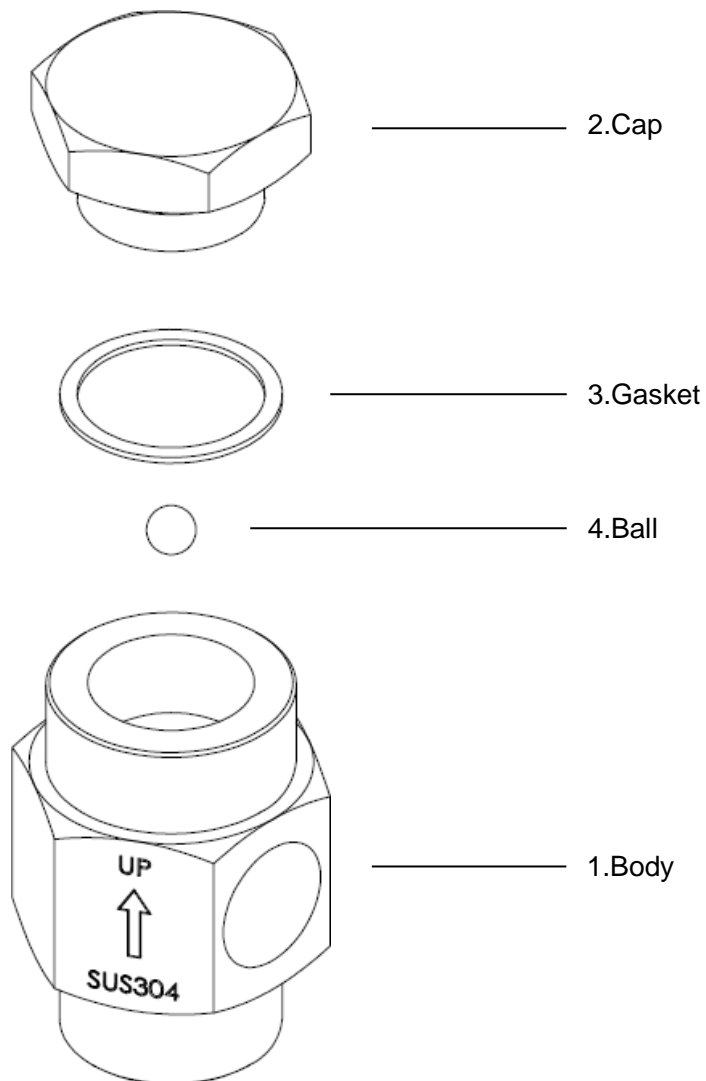
CAUTION

- When replacing parts, make sure the replacement parts are supplied by Miyawaki.

After the vacuum breaker is isolated from the system, unscrew the top cap (2) with a wrench of 36 mm and examine the product for any wear/tear and debris on the ball and/or seat, which could cause the breakage of the system pressure. Clean the parts and refit with a new gasket (3).

Recommended torque for tightening the cap : 120 Nm.

With the exception of possible cleaning this product is maintenance free. Vacuum breakers are not repairable on line.



5 WARRANTY

5.1 Warranty period

The warranty period is 18 months after shipment or 12 months after installation, whichever occurs first.

5.2 Details of the warranty

If the product stops working correctly within the warranty period, we will repair or replace the product free of charge if the cause of the trouble is not one of the following items.

- 1) The precautions described in this manual were not observed.
- 2) User's errors or mistakes such as an inappropriate installation or incorrect handling, or an excessively large impact caused by dropping
- 3) Problems caused by devices or equipment other than MIYAWAKI's, or a disallowed use environment
- 4) When a repair or modification has been performed by anyone other than MIYAWAKI or people who are authorized to make such repairs
- 5) Intrusion of salt or other substances that promote significant rust or corrosion or problems from fluids that contain the same substances
- 6) Consumable parts such as Packing, Gasket, O-ring, Diaphragm, etc.
- 7) Attachment or accumulation of foreign matter in the pipe, such as dust and scale
- 8) Problems from fires, natural disasters, or other force majeure which is not MIYAWAKI's responsibility

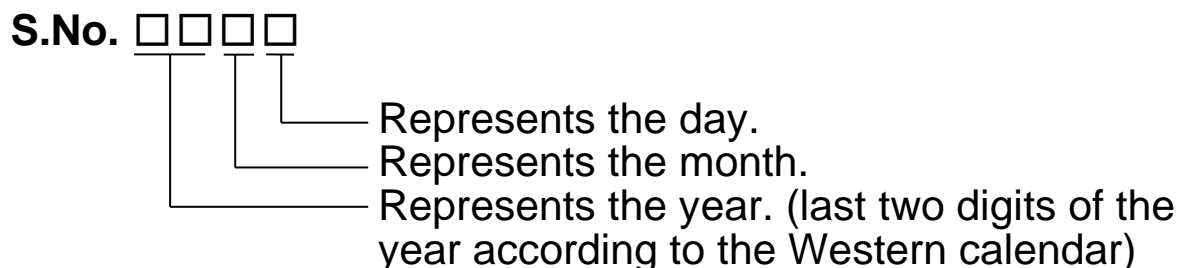
5.3 Warranty limitation

The remedy available under the warranty shall not exceed the sales price of the products delivered, for any cause whatsoever.

6 SERIAL NUMBER (S. No.) DESIGNATION

The following 4-digit or 9-digit 'S.No.' is displayed on the product.

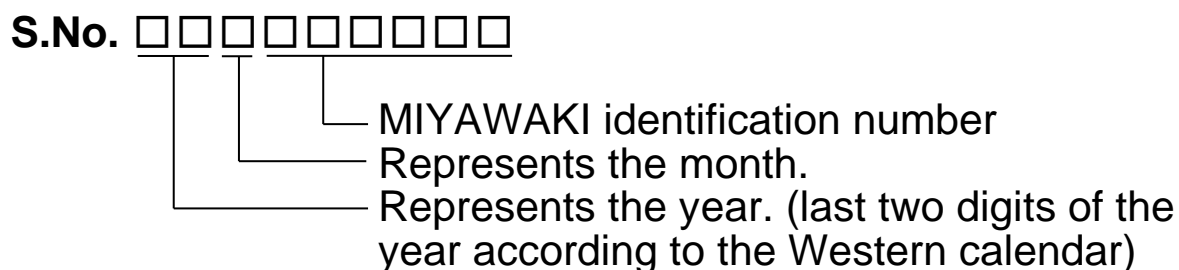
- For 4-digit display



Example of serial number designation

1 7 1 1 → Jan 1, 2017
29XM → Oct 21, 2029

- For 9-digit display



Example of serial number designation

1 7 1 1 2 C 0 2 0 → Jan , 2017
2 9 X 0 5 M 0 5 0 → Oct , 2029

Month designation system

Month	1	2	3	4	5	6	7	8	9	10	11	12
Symbol	1	2	3	4	5	6	7	8	9	X	Y	Z

Day designation system

Day	1	2	3	4	5	6	7	8	9	10	11	12
Symbol	1	2	3	4	5	6	7	8	9	A	B	C

Day	13	14	15	16	17	18	19	20	21	22	23	24
Symbol	D	E	F	G	H	J	K	L	M	N	O	P

Day	25	26	27	28	29	30	31
Symbol	Q	R	S	T	U	V	W

7 GUIDANCE FOR READING SPECIAL PRODUCT NAME



Special symbol:

**The symbol applies only to special products
(Please refer to table 1 for details)**

English letter after “-“

**Model symbol: Product
model number**

Table 1 Symbol description

Suffix	Special contents
A	Trap for high-pressure gas installed property
C	Blow valve attached
K	Change of gasket
L	Special face to face dimension
M	Change of parts material
P, T	Change of operating pressure, temperature, condensate capacity, etc.
R	Change of screen mesh
V	Change of air vent
X	Other than mentioned above or complex of special contents above

-
- For any questions about the product that you purchased or about the details in this user's manual, please contact the following.
 - © 2025 MIYAWAKI INC.
This user's manual may not be reproduced or copied in whole or in part, without the written consent of MIYAWAKI INC.
 - Some special specifications of the product may found to be different from the ones in the user's manual. If you have any question, please contact MIYAWAKI, our local authorized agent, or the company where you purchased the product.
 - In the interest of the development and improvement of our products, MIYAWAKI Inc. reserves the right to change the specification of the products without prior notice.
-



If you need any assistance regarding this manual, please contact
MIYAWAKI INC.'s International Sales Dept. or its local representative.
By scanning QR Code, you can access inquiry form.



INTERNATIONAL SALES DEPT.
2-1-30, Tagawakita, Yodogawa-ku, Osaka, 532-0021, Japan
Tel: +81-6-6302-5549
www.miyawaki-inc.com/en e-mail: export@miyawaki-inc.co.jp

EU Importer and Authorized representative:



MIYAWAKI GmbH
Birnbäumsmühle 65, 15234 Frankfurt (Oder), Germany
Tel: +49-335-4007-0097
www.miyawaki-inc.com/de e-mail: info@miyawaki.de

China Importer and Authorized representative:



MIYAWAKI WEST Co., Ltd
Room 902, Building 8, Huaqing Chuangzhi Park, No.3 Qingyan Road, Huishan District,
Wuxi City Jiangsu Province, China
Tel: +86-510-8359-5125
www.miyawaki-inc.com.cn e-mail: mywkwest@miyawaki-inc.com.cn

Korea Importer and Authorized representative:



MIYAWAKI Korea INC.
#1801, 3 Gongwon-ro, Guro-gu, Seoul, Republic of Korea (08298)
Tel: +82-2-837-9307
www.miyawaki-inc.com/ko e-mail: mkt@miyawaki.co.kr

808154-00 2504

CVU15