

ANCILLARY EQUIPMENT STRAINER

YSF

USER'S MANUAL



 **MIYAWAKI INC.**

SAFETY



WARNING

The model YSF is a cast steel strainer installed ahead of the equipment.

In order to get maximum benefit from this product, be sure to read this manual thoroughly before installing the product.

The following warnings and cautions are shown at appropriate places in this manual.



Failure to observe this type of precaution may lead to serious injury or death.



Failure to follow this type of precaution can lead to injury or damage to equipment and property.

Table of Contents

1. SPECIFICATION AND MARKING	1
2. CONSTRUCTION DETAILS	2
3. INSTALLATION	3
4. MAINTENANCE	4
5. WARRANTY	6
6. SERIAL NUMBER (S.No.) DESIGNATION	7
7. GUIDANCE FOR READING SPECIAL PRODUCT NAME	8

1 SPECIFICATION AND MARKING



WARNING

Be sure not to use this product at higher pressures than the specified maximum operating pressure (PMO) or at temperatures higher than the specified maximum operating temperature (TMO).

The following items are displayed on the name plate or the side of the product.
Check each item to avoid misuse of the product.

(1) Maximum allowable pressure (PMA): 4.9 MPa (711 psig)

(2) Maximum allowable temperature (TMA): 425°C (797°F)

(3) Maximum operating pressure (PMO): 4.9 MPa (711 psig)

(4) Maximum operating temperature (TMO): 425°C (797°F)

(5) Size:

YSF-(15, 20, 25)(F,W) 15 mm (1/2"), 20 mm (3/4"), 25 mm (1"),

YSF-(32, 40, 50)(F,W) 32 mm (1 1/4"), 40 mm (1 1/2") , 50 mm (2")

(6) Serial number: Showing the year and date of production

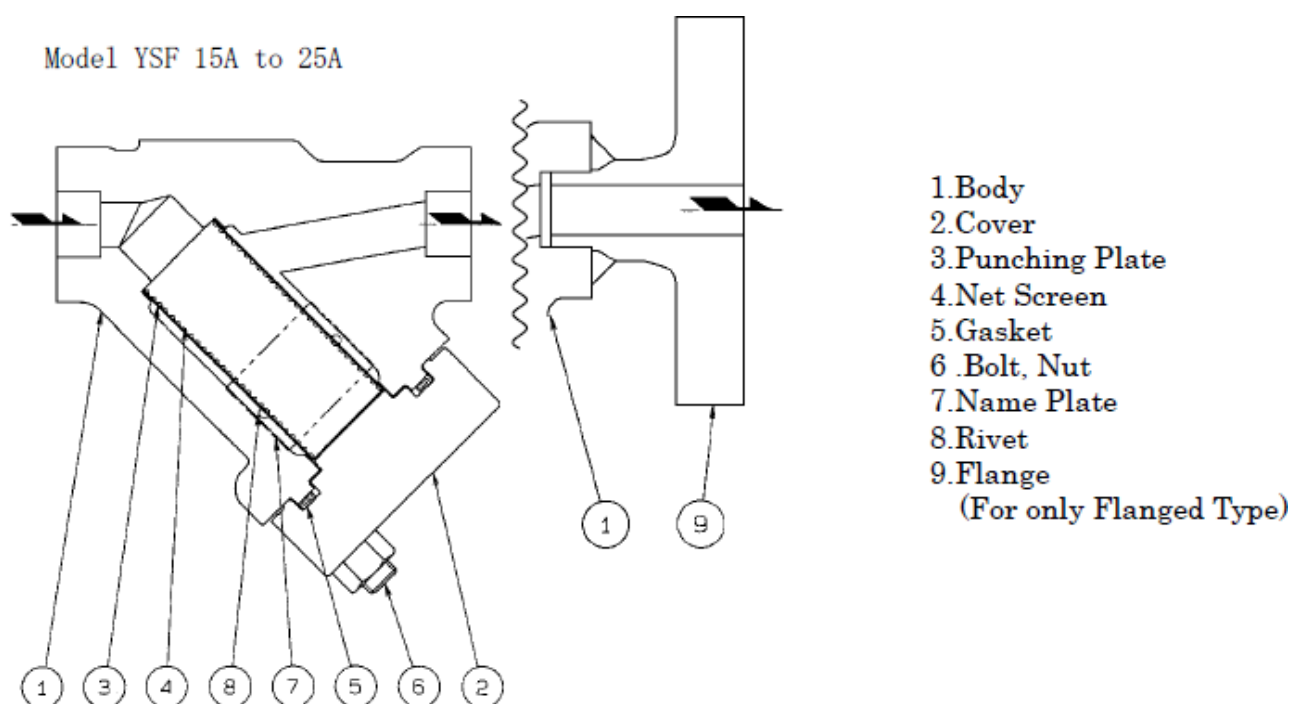
(7) Body material:

YSF-(15, 20, 25)(F,W) Forged Steel A105

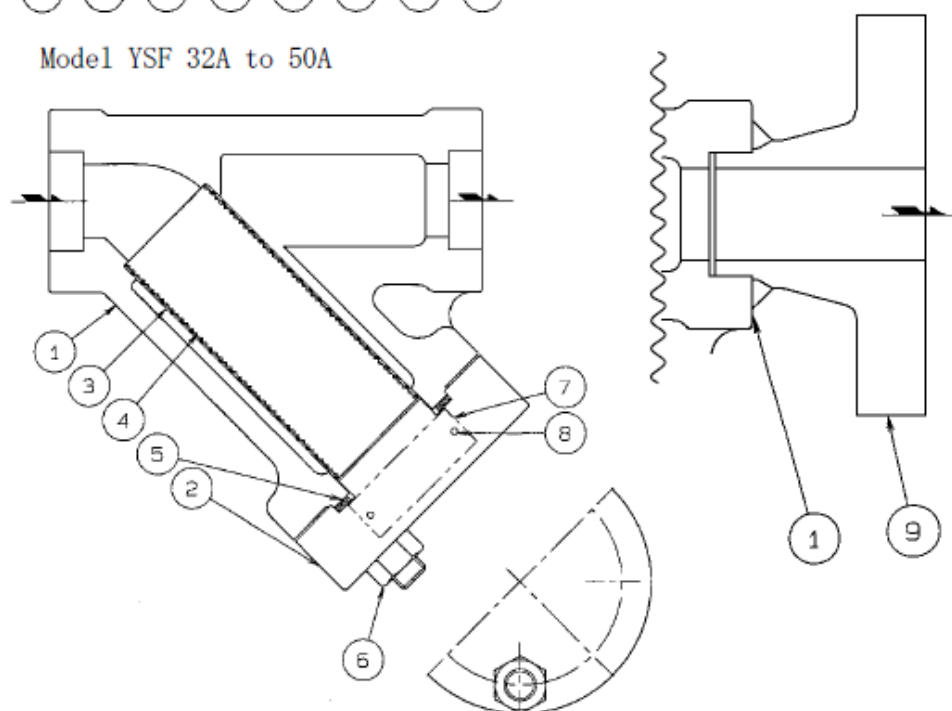
YSF-(32, 40, 50)(F,W) Forged Steel S25C

2 CONSTRUCTION DETAILS

Model YSF 15A to 25A



Model YSF 32A to 50A



3 INSTALLATION



WARNING

Pay very careful attention when working in hazardous environments. There is a risk of explosion and the possibility of dangerous gases leaking. Always check whether the pipeline contains flammable, high pressure or high temperature materials before starting to work.

- Make sure that isolation valves are installed on both the upstream and downstream lines.



CAUTION

Before installing the product, open both isolation valves and the bypass valve, if one exists, to blow out any debris or dirt inside the pipeline or equipment. After blowing out the line and/or the equipment, before starting to work, close the isolation valves and allow time for the temperature to drop to a safe working temperature.

When installing the product, be sure to leave clearance for maintaining it.

- 1) Remove the dustproof seals covering both connections.
※Products shipped in plastic bags may not have dustproof seals.
- 2) Check the flow direction indicated on the body.
- 3) Install ahead as close to the equipment as possible.
- 4) Install in an accessible location for maintenance.
- 5) Open the isolation valve on the upstream line slowly and make sure the product works normally.

4 MAINTENANCE



WARNING

- Before removing the strainer from the pipe or disassembling it, be sure to close the isolation valves. Then, release the residual pressure from the strainer body (make sure that the pressure in the main body is equal to the atmospheric pressure). After it has fully cooled down (after the temperature of the main body has reached ambient temperature), confirm for safe conditions and then begin to work.
- Even when the isolation valves are closed, there may be residual internal pressure due to leaks from the isolation valves. Therefore, be very careful.



CAUTION

- When replacing parts, make sure the replacement parts are supplied by Miyawaki.

4.1 Repairs

When a strainer fails, it is necessary to clean the internal parts and to replace damaged parts. Take the failed strainer apart following the steps below

4.1.1 Disassembling the strainer

- 1) Untighten the bolts, nuts (6), and remove the cover (2) from the body (1).
- 2) Take out the screen (the punching plate (3) and the net screen (4)) from the body (1), check and clean it. If the screen is damaged, replace it with a new one.
- 3) Clean the body (1) and the cover (2).
- 4) Remove the gasket (5) and clean the sealing surfaces of the body (1) and cover (2).



CAUTION

Clean the body (1) and cover (2) with care not to damage the sealing surface. Scratches on the sealing surface may cause leakage.

After cleaning the strainer and replacing damaged parts, re-assemble the parts in reverse order as follows. Refer to the torque table for each part.

4.1.2 Reassembling the strainer

- 1) Attach the screen (the punching plate (3) and the net screen (4)) to the body (1)
- 2) Place the gasket (5) on the sealing surface of the cover (2).
- 3) Install the cover (2) with the gasket (5) on the body (1) and tighten the bolts, nuts (6).

Torque table

Model	Size	Parts	Tools	Across the flats	Torque
YSF-(15, 20, 25)(F,W)	15, 20, 25 mm	Bolt, Nut (6)	Torque wrench	19 mm (0.75")	100 N·m
YSF-(32, 40, 50)(F,W)	32, 40, 50 mm			22 mm (0.87")	120 N·m



CAUTION

When reassembling always replace the gasket (5) with a new one. Tighten the bolts and nuts (6) evenly crosswise.

5 WARRANTY

5.1 Warranty period

The warranty period is 18 months after shipment or 12 months after installation, whichever occurs first.

5.2 Details of the warranty

If the product stops working correctly within the warranty period, we will repair or replace the product free of charge if the cause of the trouble is not one of the following items.

- 1) The precautions described in this manual were not observed.
- 2) User's errors or mistakes such as an inappropriate installation or incorrect handling, or an excessively large impact caused by dropping
- 3) Problems caused by devices or equipment other than MIYAWAKI's, or a disallowed use environment
- 4) When a repair or modification has been performed by anyone other than MIYAWAKI or people who are authorized to make such repairs
- 5) Intrusion of salt or other substances that promote significant rust or corrosion or problems from fluids that contain the same substances
- 6) Consumable parts such as Packing, Gasket, O-ring, Diaphragm, etc.
- 7) Attachment or accumulation of foreign matter in the pipe, such as dust and scale
- 8) Problems from fires, natural disasters, or other force majeure which is not MIYAWAKI's responsibility

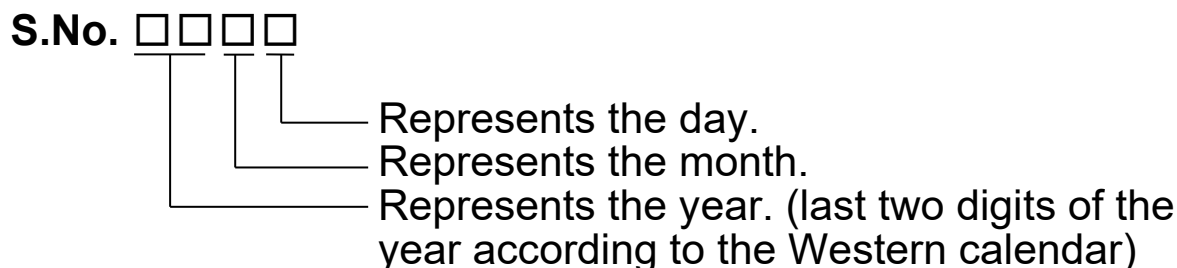
5.3 Warranty limitation

The remedy available under the warranty shall not exceed the sales price of the products delivered, for any cause whatsoever.

6 SERIAL NUMBER (S. No.) DESIGNATION

The following 4-digit or 9-digit 'S.No.' is displayed on the product.

- For 4-digit display

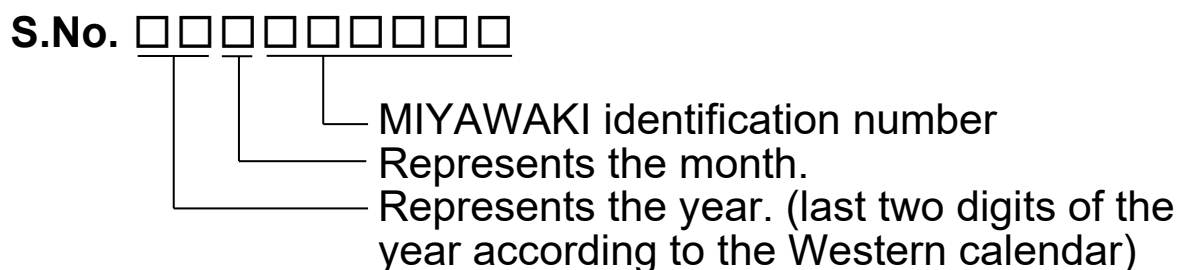


Example of serial number designation

1 7 1 1 → Jan 1, 2017

29XM → Oct 21, 2029

- For 9-digit display



Example of serial number designation

1 7 1 1 2 C 0 2 0 → Jan , 2017

2 9 X 0 5 M 0 5 0 → Oct , 2029

Month designation system

Month	1	2	3	4	5	6	7	8	9	10	11	12
Symbol	1	2	3	4	5	6	7	8	9	X	Y	Z

Day designation system

Day	1	2	3	4	5	6	7	8	9	10	11	12
Symbol	1	2	3	4	5	6	7	8	9	A	B	C

Day	13	14	15	16	17	18	19	20	21	22	23	24
Symbol	D	E	F	G	H	J	K	L	M	N	O	P

Day	25	26	27	28	29	30	31
Symbol	Q	R	S	T	U	V	W

7 GUIDANCE FOR READING SPECIAL PRODUCT NAME



Special symbol:

**The symbol applies only to special products
(Please refer to table 1 for details)**

English letter after “-“

**Model symbol: Product
model number**

Table 1 Symbol description

Suffix	Special contents
A	Trap for high-pressure gas installed property
C	Blow valve attached
K	Change of gasket
L	Special face to face dimension
M	Change of parts material
P, T	Change of operating pressure, temperature, condensate capacity, etc.
R	Change of screen mesh
V	Change of air vent
X	Other than mentioned above or complex of special contents above

-
- For any questions about the product that you purchased or about the details in this user's manual, please contact the following.
 - © 2025 MIYAWAKI INC.
This user's manual may not be reproduced or copied in whole or in part, without the written consent of MIYAWAKI INC.
 - Some special specifications of the product may found to be different from the ones in the user's manual. If you have any question, please contact MIYAWAKI, our local authorized agent, or the company where you purchased the product.
 - In the interest of the development and improvement of our products, MIYAWAKI Inc. reserves the right to change the specification of the products without prior notice.
-



If you need any assistance regarding this manual, please contact
MIYAWAKI INC.'s International Sales Dept. or its local representative.
By scanning QR Code, you can access inquiry form.



INTERNATIONAL SALES DEPT.

2-1-30, Tagawakita, Yodogawa-ku, Osaka, 532-0021, Japan

Tel: +81-6-6302-5549

www.miyawaki-inc.com/en e-mail: export@miyawaki-inc.co.jp

EU Importer and Authorized representative:



Birnbaumsmühle 65, 15234 Frankfurt (Oder), Germany

Tel: +49-335-4007-0097

www.miyawaki-inc.com/de e-mail: info@miyawaki.de

China Importer and Authorized representative:



Room 902, Building 8, Huaqing Chuangzhi Park, No.3 Qingyan Road, Huishan District,
Wuxi City Jiangsu Province, China

Tel: +86-510-8359-5125

www.miyawaki-inc.com.cn e-mail: mywkwest@miyawaki-inc.com.cn

Korea Importer and Authorized representative:



#1801, 3 Gongwon-ro, Guro-gu, Seoul, Republic of Korea (08298)

Tel: +82-2-837-9307

www.miyawaki-inc.com/ko e-mail: mkt@miyawaki.co.kr

808168-00 2507

YSF